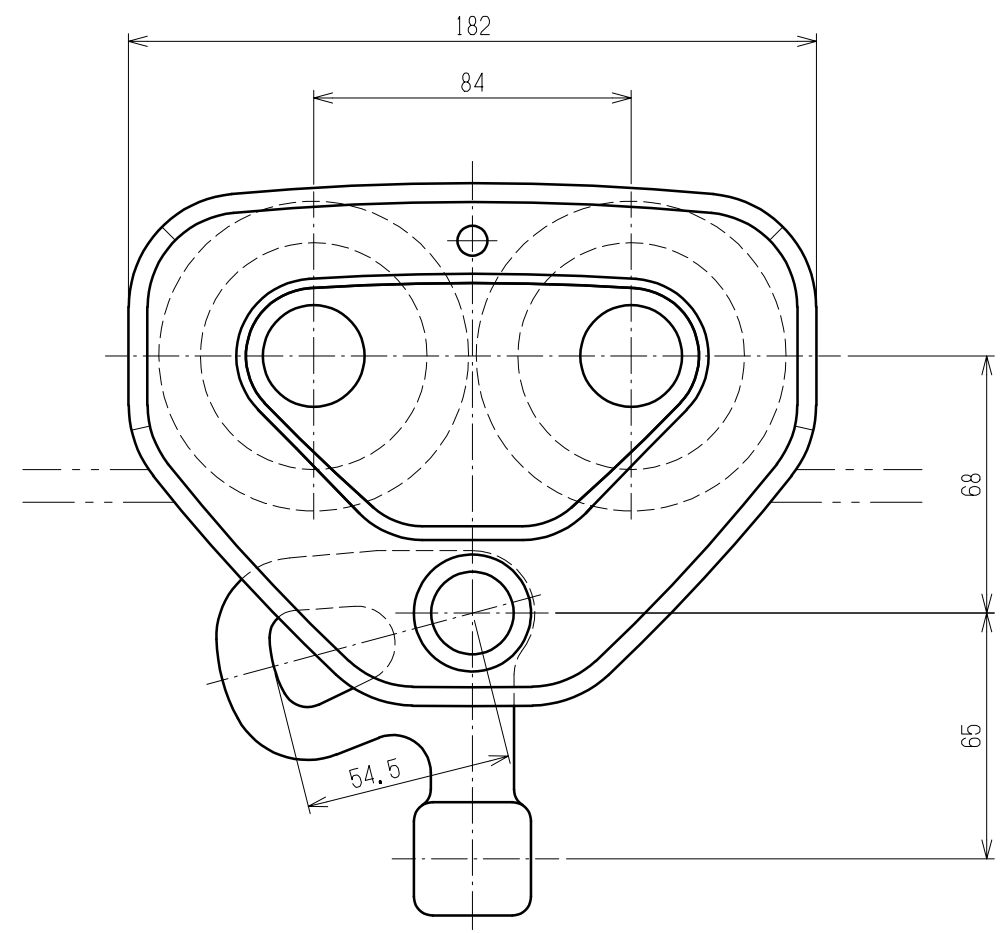
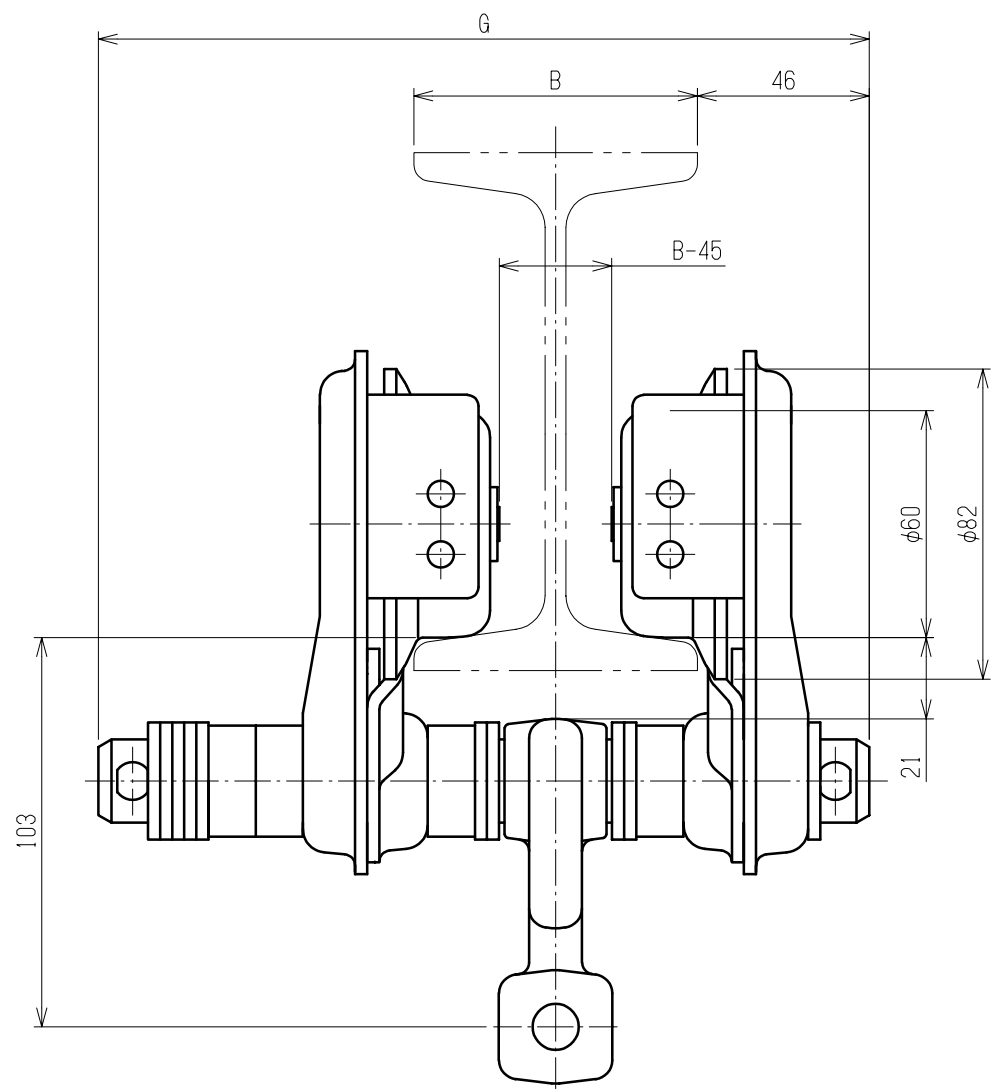


1 2 3 4 5 6 7 8 9



Particulars			
Nominal Capacity	500 kg		
Min. Radius for Curve	1100 mm	1150 mm	1200 mm
Flange Width : B	50~102mm	103~203mm	204~305mm
Max. Dimension of Trolley Width : G	204 mm	304 mm	404 mm
Mass	4.5 kg	4.8 kg	5.1 kg

Note:
 For Manual Chain Hoist
 The trolley can be installed on either tapered or flat flange.
 50 to 57mm available for only straight beam.

						APPROVED	CHECKED	DESIGNED	DRAWN
						T. Hiroshima	T. Ogata	M. Ono	M. Ono
						2024. 04. 26	2024. 04. 26	2024. 04. 26	2024. 04. 26
REV.	QTY	CONTENTS			DATE	DRAWN	APPROVED	KITO	

TITLE			
500 kg TS SERIES PLAIN TROLLEY			
CODE	TSP005	SCALE	1:2
DWG. NO.	T7PF005-12100	REV.	0