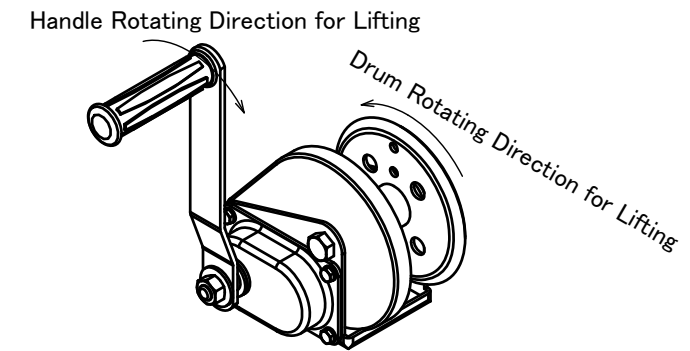
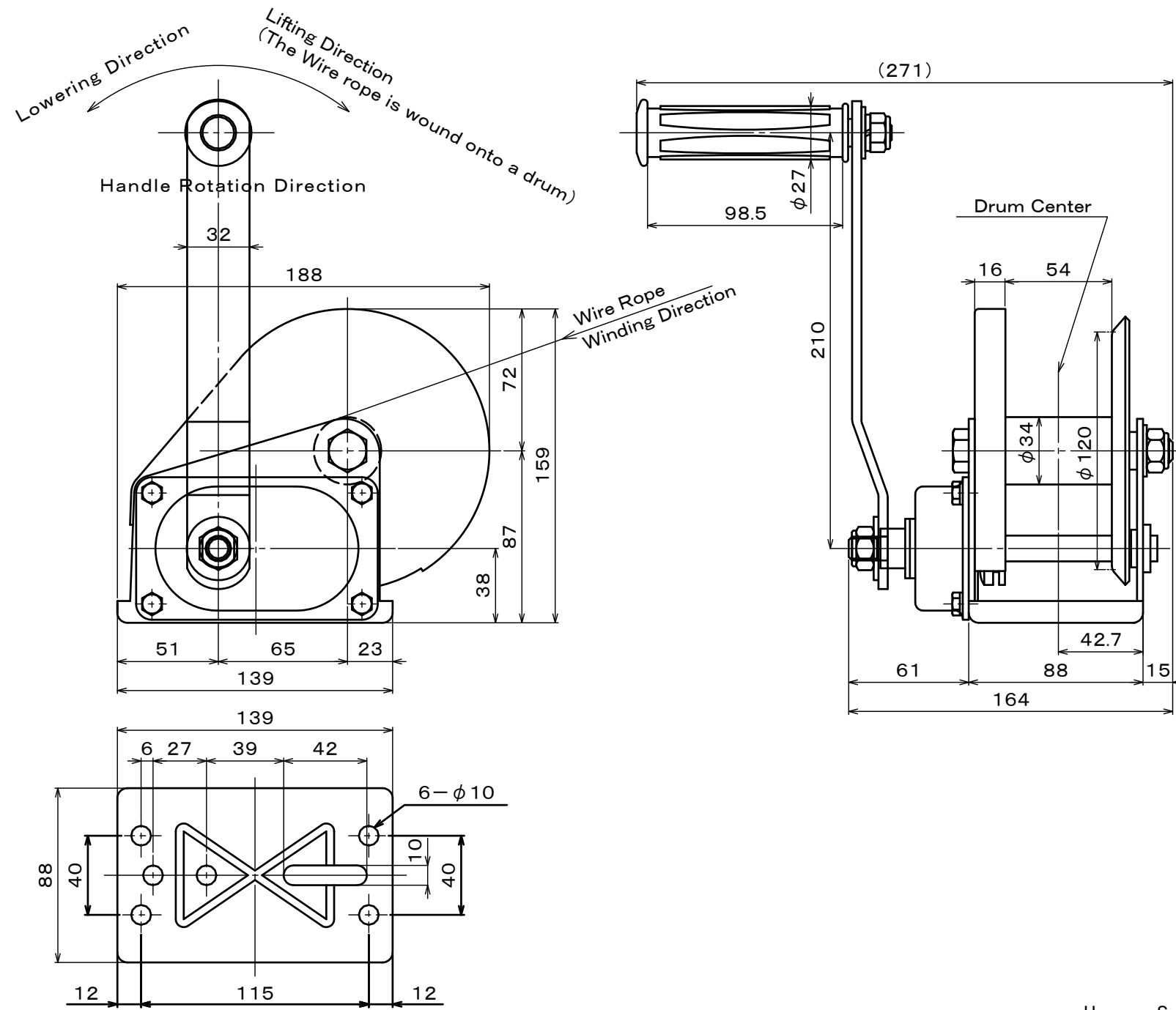


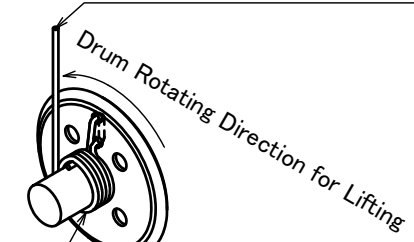
NOTES : UNLESS OTHERWISE SPECIFIED

1. ALL DIMENSION ARE IN MILLIMETERS.
2. TO PREVENT IRREGULAR WINDING OF THE WIRE ROPE AROUND THE DRUM, KEEP THE FLEETANGLE 2 DEGREES OR LESS. PLEASE INSTALL THE PULLEY 10mm OR MORE AWAY FROM THE DRUM ON THE CENTER LINE OF THE DRUM.
3. THE VALUE OF SPECIFIED "WIRE ROPE TENSION" ON THIS DRAWING IS FOR THE STANDARD LAYER OR LESS. THE VALUE OF THE "WIRE ROPE TENSION" MUST BE DECREASED ACCORDANCE WITH THE RATIO OF THE ACTUAL WINDING LAYERS, IF IT EXCEEDED.

Specifications			
Load Rating Wire Rope Tension	1,960N (=200kgf) Standard layer or less	Handle Force	Wire Rope Standard Wre Handle Rope Layer Length Force
Drum Capacity	φ4mm ... 25.0m ; 9-Layer Windings φ5mm ... 15.5m ; 7-Layer Windings	Wire Rope Tension 1,960N	φ4mm 6-Layer 14.0m 114N (=11.6kgf) φ5mm 5-Layer 9.5m 115N (=11.7kgf)
Gear Ratio	1 / 4.1	Standard Accesories	One Handle
Handle Length	210mm	Painting	Epoxy-Based Powder Coating, Single Coat Painting Color RAL 1033
Weight	3.3kg (Winch + Handle)		

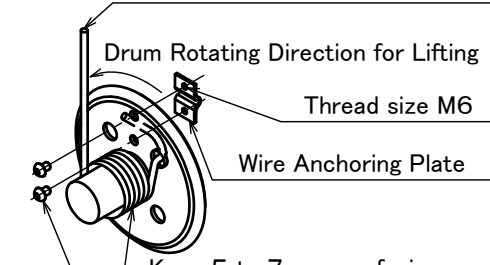


At the time when use the φ4mm wire rope



Keep 5 wraps of wire rope wound onto the drum at all times as the extra maintenance winding.

At the time when use the φ5mm wire rope



Keep 5 to 7 wraps of wire rope wound onto the drum at all times as the extra maintenance winding.

Hexagon Socket Button Head Cap Screw M6

4 x			図面番号 / DRAWING No. PM2-220915-01E	改訂番号 / REVISION No. 00	お客様 / CUSTOMER	符号 / MARK	項目 / PARTICULARS	材料 / MATERIAL	数量 / QTY	単体重量 (kg) / TOTAL WEIGHT	備考 / REMARKS
3 x			承認 / APPROVED	検閲 / CHECKED	作成 / DRAWN	図面名 / TITLE	投影法 / PROJECTION METHOD				
2 x			設計課 23.09.15 米澤	設計課 23.09.15 松嶺	設計課 23.09.15 平形	MINI MAXPULL WINCH MODEL PM-200	第三角法 THIRD ANGLE PROJECTION 尺度 / SCALE				
1 x							台数 / QTY				
改訂 / REVISION	2023/09/15	CHANGED THE FIXED HOLES etc. FROM DRAWING No. PM-170309-01E									

