



PENDANT SWITCH FOR AIR HOIST

**PCS-1
PCS-2**

INSTRUCTION MANUAL

- Never use the hoist to lift or transport people.
- Always read this manual before operating.
- Keep this manual available carefully.

ENDO KOGYO CO., LTD.

ENDO

HM-10011a

Issued on Nov. 1997

Copyright and liabilities

The copyright for this manual belongs to Endo Kogyo Co., Ltd.

The manual is provided for the limited purpose of supporting the safe and proper use of the product. It cannot be used for other purposes.

The customer may not use or make copies of this manual, in whole or in part, outside of this purpose without receiving prior consent from Endo Kogyo Co., Ltd.

The customer is also prohibited from translating or modifying the content of the manual, in whole or in part.

The content described in the manual is subject to change without advance notice.

Please note this in advance.

November 2019 ENDO KOGYO CO., LTD.

CONTENTS

I. Specification	1
II. Caution and check before installation.....	1
III. Installation	1
1. Mounting it to a hoist	1
2. Installation of a hoist	2
IV. Checks after installation and Test run.....	2
V. Caution on Use	3
VI. Lubrication	3
VII. Disassembly and Reassembly.....	3
1. Procedure of disassembly.....	3
2. Reassembly	5
VIII. Parts lists	6

Copied digital data
from <http://www.endo-kogyo.co.jp/>

Important

- Before operation and mounting a pendant switch, read this manual and the introduction manual for a hoist carefully. And never use this without understanding this contents enough.
- A person who installs, maintains and uses a hoist always has to read this manual.
- Always keep this manual available with a instruction manual for a hoist so that this is used at maintenance and inspection.

I . Specification

Type	PCS-1	PCS-2
Available air pressure MPa {kgf/cm ² }	0.4~0.6 {4~6}	
Available air hoist	EHL-025TS EHL-05TS EHL-1TW	EHL-1TS EHL-2TW EHL-3TS EHL-6TW
Mass (kg)	2.3	2.7

II . Checks before Installation and Cautions.

- Check that a delivered pendant switch is the same as your order(check the name plate)
- Check there was no damage to a pendant switch during transportation.

III. Installation

Caution

- Always shut off air supply before mounting when a hoist is already installed.
- Never do a work on an unstable condition. Make as stable condition for safety work.
- Allow only qualified or educated people to mount a pendant switch to a hoist.
- Careless working makes a hoist and pendant switch damage or makes people injure. So do a suitable working.

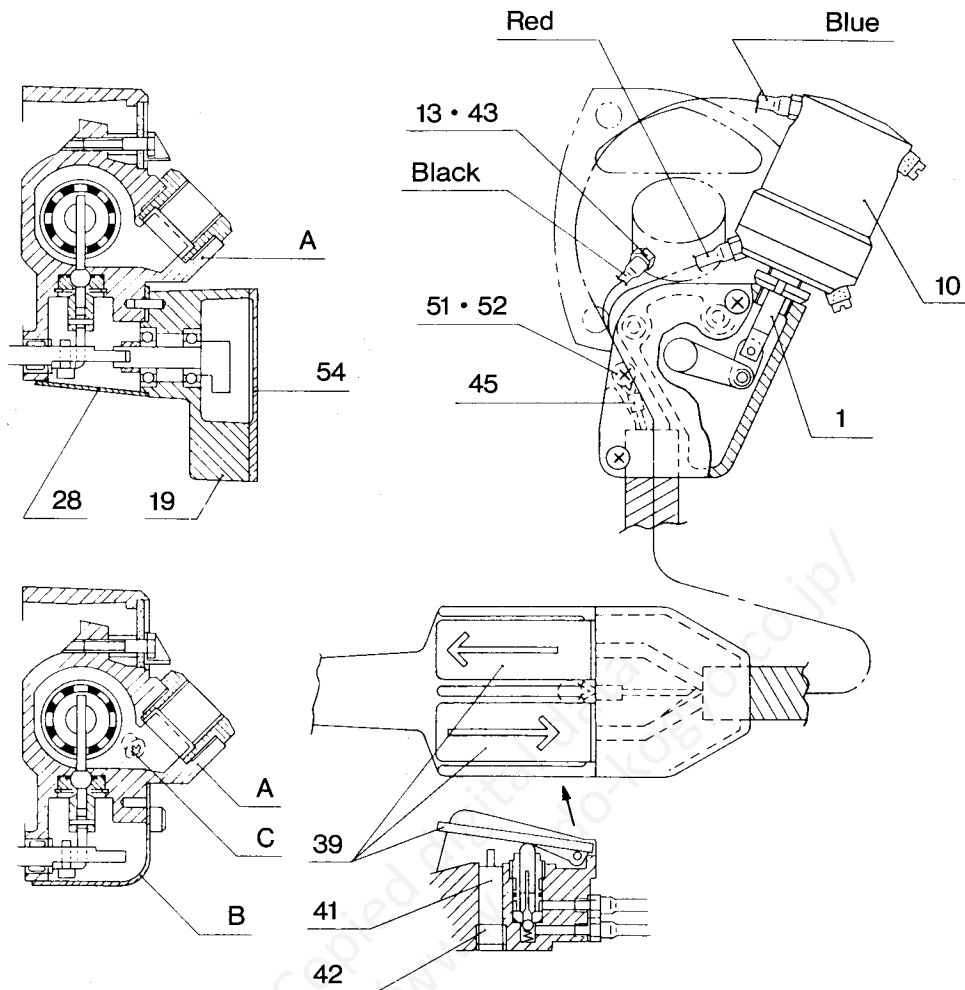
1. Mounting it to a hoist (See fig. 1)

When a pendant switch is delivered separately from a hoist, attach a pendant switch to the hoist using the following procedure.

For the hoists of models EHL-1TS, EHL-2TW, EHL-3TS and EHL-6TW, a pendant switch is not installed in the factory even if a pendant switch is included in the specifications.

- 1) Remove Cover(B) and Machine screw(C) from Valve housing(A).
- 2) Mount Seal(13) and Nipple(43) which is shipped with a pendant switch to the mounting portion.
- 3) Remove Cover(54) from Cylinder holder(19).
- 4) Mount Cylinder(10) and Cylinder holder(19) in a body with Cover(28) to Valve housing(A).
- 5) Fix Wire rope(45) on Cylinder holder with Plain washer(51) and Machine screw(52).

- 6) Pipe nylon tubes according to the difference of color.
- 7) Mount Cover(54).



Fig,1

2. Installation of a hoist.

- Follow the instruction manual for a hoist.

IV. Checks after installation and Test run.

1. Follow the instruction manual to check Load chain, Lifting, Limit switch for lifting and lowering.
2. Speed adjustment by a pendant switch(See fig,1)
 - Push button set(34) meets Buffer spool compl.(41) at first.
In this stage, a hoist operates at a low speed.
The stronger a push button is pushed, the more the speed is increasing to its maximum.
 - Before shipping, Buffer spool compl(41) is adjusted to lift a rated load at a low speed when supplying air pressure is 0.4MPa {4kgf/cm²} .
If required, the hoisting speed is reduced by readjustment of Buffer spool compl.
Turn Screw(42) counterclockwise to increase the speed, and Turn Screw(42) clockwise to reduce the speed.

V. Caution on Use.

- Do not suddenly start, suddenly stop or suddenly reverse the hoist. Operate a hoist smoothly.
- Never lock the push button switch at operating position. Certainly operate a pendant switch by operator himself.
- Never strike a pendant switch against the lifted load and structures.
- Never pull a pendant switch when a trolley is used.

VI. Lubrication

- For inspection and maintenance, Clean a pendant switch thoroughly everytime a pendant switch is disassembled and lubricate a pendant switch again.
- Coat the lithium saponified molydenum disulfide grease equivalent corresponding to the No2 class of NLGI (National Lubrication Grease Institute) (Molykote BR2-S, and so on)
- Coat a grease of EP type to other sliding surfaces.
See Recommended Lubricants on Instruction manual of a hoist.

VII. Disassembly and Reassembly

Caution

- Always shut off the air supply before disassembly and reassembly.
- Careless working may cause the damage to the hoist or/and injury to people. Therefore, perform the suitable work.
- Qualified or well trained personnel should perform the work.
- Whenever grasping the parts in a vise, always use copper-covered vise jaws to protect the surface of the parts and help preventing distortion.

1. Procedure of Disassembly

- Follow Instruction manual for a hoist regarding the removal and disassembly of a hoist.
- Follow the under mentioned procedure for disassembly of a pendant switch seeing the drawing(P-8)

When consumption parts is replaced, disassemble only required portions.

- 1) Remove Cover(54), and take off Nylon tube(47,48,49) from Cylinder(10) and a hoist.
- 2) Take off Wire rope(45) from Cylinder holder(19).
- 3) Remove Cylinder holder and Cylinder in a body.
- 4) Take off Retaining ring(27), put out Pin(26) from behind Cylinder holder. (There is a hole to put out Pin.)
- 5) Measure the dimension between Bearing nut(16) and Cylinder Cover(11) (See fig,2)

note; Measurement is required when assembling, Never fail to do.

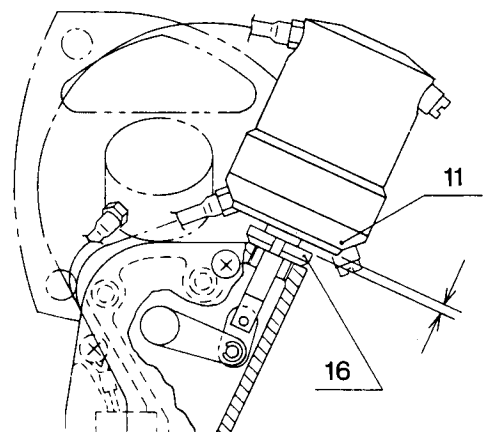


Fig.2

- 6) Loosen Bearing nut, take off Cylinder from Cylinder holder.
- 7) Cylinder portion
 - ① Remove Cap screw(12).
 - ② Remove Lock nut, pull out Piston(7), Spacer(4),(6), Spring(5), Ring(3).
 - ③ Remove Retaining ring(2), remove Cylinder Cover(11).
- 8) Cylinder holder portion
 - ① Check that Shaft rotates smoothly and the connecting part is not worn.
If there is not any abnormality, it is not necessary to disassemble Shaft.
 - ② Push out Shaft from Sleeve side(25) by hand press.
- 9) Valve housing portion
 - ① Remove Valve Cover(50), remove Nylon tube and Wire rope.
 - ② Remove Pin(40) and Push button set.
 - ③ Pull out Valve knob(38), Pin(37).
 - ④ Remove Liner(36), take off Sheet(35), Steel ball(33), Spring(32).

Copied digital data
from <http://www.endo-kogyo.co.jp/>

2. Reassembly

Caution

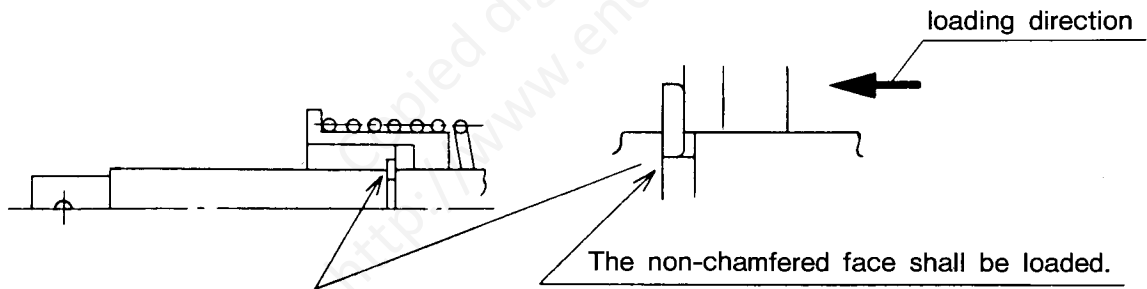
- Before reassembly, clean all parts of hoist disassembled to check cracks, flaws, deformation and wear.
- Never use acidic solvent.
- Replace every damaged parts and excessively worn parts.
Also replace burred or damaged screws.
- Always use manufacturer's replacement parts.
- Do not use solvent when cleaning the rubber parts such as O-ring, etc and the plastic parts.
- Whenever grasping the parts in a vise, always use copper-covered vise jaws to protect the surface of the part and help preventing distortion.
- Always press the inner ring of ball-type bearing when installing the ball bearing on the shaft.
- Always press the outer ring of ball-type bearing when pressing the ball bearing in a bearing recess.

Reassembly should be done according to reverse procedure of disassembly, and be careful with following points.

—1) Always replace Retaining ring with new one.

—2) Assembly directions for Retaining ring(See fig,3)

Set Retaining ring so that the non-chamfered face is loaded.

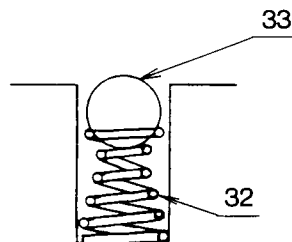


Fig,3

—3) Mount Cylinder(10)and Cylinder holder(19) so that the dimensions are to be measured at disassembly.

—4) Mount Spring(32) as shown fig,4.

Be careful for Steel balls(33) not to fall down from the upper surface of Spring.



Fig,4

VIII. Parts list

Remark when purchasing parts

- Specify part No., part name and model of hoist.
- State clearly SER. No. (product No.) if attached.
- The parts without part No. cannot be supplied individually.
Please purchase a set or completed unit.

■ How to read parts list

Ref. No.	Part No.	Quantity		Description
		PCS-1	PCS-2	
—	LHP000018	1	1	Control valve assembly ←
13	P2H400214	4	4	— Seal
30	P2H100018	1	1	— Valve housing
41	LHP000053a	2	2	— Buffer spool compl. ←
41-1	P2H400252a	2	2	— — Spring case
41-2	P2H400253	2	2	— — Spool
41-3	P2H400254	2	2	— — Spring
41-4	KA40210007	2	2	— — Retaining ring
53	KA10220510	2	2	→ — Machine screw

This mark shows the range of set or the completed unit.

■ PARTS LIST PCS-1·PCS-2 PENDANT SWITCH

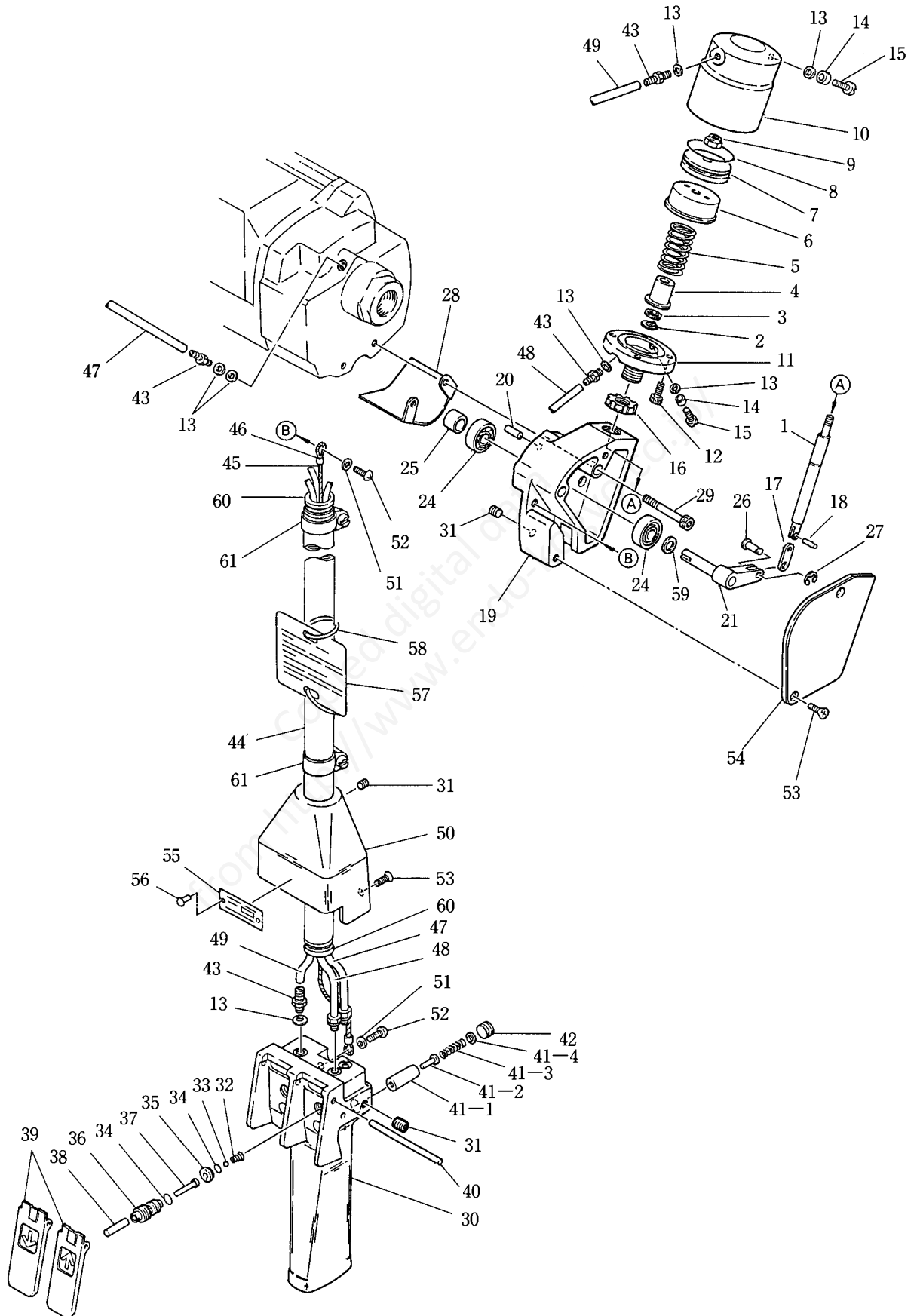
Ref. No.	Part No.	Quantity		Description	Ref. No.	Part No.	Quantity		Description
		PCS-1	PCS-2				PCS-1	PCS-2	
-	LHP000016a	1	-	Cylinder assembly	-	LHP000018	1	1	Control valve assembly
-	LHP000017a	-	1	Cylinder assembly	•13	P2H400214	4	4	-Seal
-	LHP000202a	1	-	-Cylinder compl.	30	P2H 100018	1	1	-Valve housing
-	LHP000203a	-	1	-Cylinder compl.	31	KA 16110508	2	2	-Set screw
1	P2H400215	1	1	--Piston rod	32	P2H300158	2	2	-Spring
•2	KA40110007	1	1	--Retaining ring	33	KA63100304	2	2	-Steel ball
3	P2H400216a	1	1	--Ring	•34	KA50100080	4	4	-O-ring
4	P2H400217a	1	1	--Spacer	35	P2H400247	2	2	-Seat
5	P2H400218	1	1	--Spring	36	P2H300159	2	2	-Liner
6	P2H400219a	1	1	--Spacer	37	P2H400248	2	2	-Pin
7	P2H400220a	1	1	--Piston	38	P2H400249	2	2	-Valve knob
•8	KA50100315	1	1	--O-ring	39	LHP000210	1	1	-Push button set
•9	P2H400221	1	1	--Lock nut	40	P2H400251a	1	1	-Pin
10	P2H300156b	1	1	--Cylinder	41	LHP000053a	2	2	-Buffer spool compl.
11	P2H300157	1	1	--Cylinder cover	41-1	-	2	2	--Spring case
12	KA00910410	4	4	--Cap screw	41-2	-	2	2	--Spool
•13	P2H400214	4	4	--Seal	41-3	-	2	2	--Spring
14	P2H400222	2	2	--Silencer	41-4	-	2	2	--Retaining ring
15	P2H400223	2	2	--Bolt	42	P2H400256	2	2	-Set screw
16	KA64101002	1	1	--Bearing nut	43	P2H400257b	3	3	-Nipple
17	P2H400224a	1	-	--Link	50	P2H200059a	1	1	-Valve cover
17	P2H400208a	-	1	--Link	53	KA 10220510	2	2	-Machine screw
18	P2H400865	1	1	--Pin	•13	P2H400214	2	2	Seal
43	P2H400257b	2	2	--Nipple	43	P2H400257b	1	1	Nipple
-	LHP000204	1	-	-Cylinder holder compl.	-	LHP000019c	1	1	Control tube compl.
-	LHP000205	-	1	-Cylinder holder compl.	44	-	1	1	-Protection hose
19	P2H200058b	1	-	--Cylinder holder	60	-	2	2	-Inner
19	P2H200057a	-	1	--Cylinder holder	45	-	1	1	-Wire rope
20	KA43200412	1	1	--Parallel pin	46	-	2	2	-Lock tube
21	LHP000076	1	-	--Shaft	47	-	1	1	-Nylon tube(black)
21	P2H300150	-	1	--Shaft	48	-	1	1	-Nylon tube(red)
24	KA60102012	2	-	--Ball bearing	49	-	1	1	-Nylon tube(blue)
24	KA60103032	-	2	--Ball bearing	61	KA86100022	2	2	-Hose clip
25	P2H400165	1	-	--Sleeve	51	KA30220500	2	2	Plain washer
25	P2H400209	-	1	--Sleeve	52	KA 10120510	2	2	Machine screw
26	P2H400228	1	1	--Pin	55	P2H300261	1	-	Name plate
27	KA40310040	1	1	--Retaining ring	55	P2H300262	-	1	Name plate
29	KA00910642	2	-	--Cap screw	56	KA 14549803	2	2	Drive screw
29	KA00910844	-	2	--Cap screw	57	P2H300274b	1	1	Caution plate
31	KA 16110508	1	1	--Set screw	58	P2H400465a	2	2	Convex belt
53	KA 10220510	2	2	--Machine screw					
54	P2H300162a	1	-	--Cover					
54	P2H300152	-	1	--Cover					
59	P2H400265	1	-	--Spacer					
28	P2H400229	1	-	-Cover					
28	P2H300151	-	1	-Cover					

We recommend that you stock parts indicated by a bullet(•).

Parts without part numbers can not be supplied separately.

When ordering spare parts, specify part number(not the reference number), description and model of the hoist.

■ PCS-1
 ■ PCS-2



Copied digital data
from <http://www.endo-kogyo.co.jp/>

 **ENDO KOGYO CO., LTD.**

Head Office & Plant : 3-14-7, Akiba-cho, Tsubame, Niigata, Japan
Tel. 0256-62-5131 FAX.0256-62-5772

Tokyo Office : Tanaka Bldg., 2F, 12, Kanda Higashimatushita-cho,
Chiyoda-ku, Tokyo Japan
Tel. 03-5295-3711 FAX.03-5295-3717

Osaka Office : Daito Bldg., 3F, 3-14, Saiwai-cho 2-Chome,
Naniwa-ku, Osaka, Japan
Tel. 06-6568-1571 FAX.06-6568-1573

Kyusyu Office : Bunki Bldg., 3F, 11-15, Hakataekihigashi 3-Chome,
Hakata-ku, Fukuoka, Japan
Tel. 092-412-5281 FAX.092-412-5280