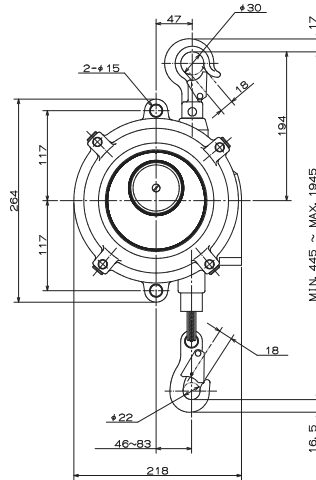


EWF-22/30

Standard

FUNCTION

- Gauge
- Cartridge spring assembly
- Plug type cable set
- Fall arrest device
- Drum lock device
- Worm gear spring adjustment
- CE Mark available



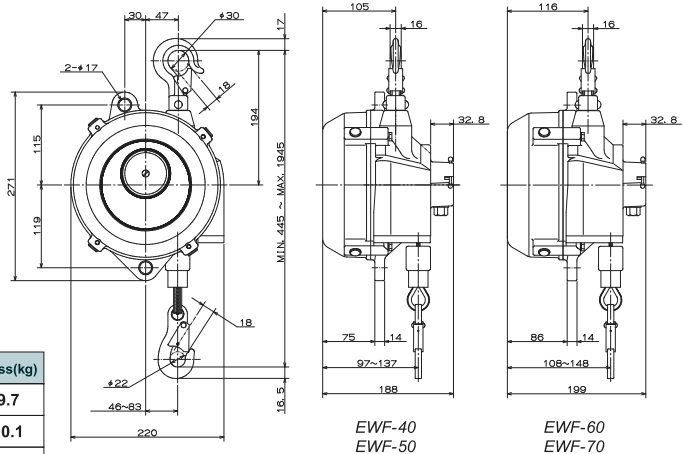
Model	Capacity(kg)	Travel(m)	Cable dia(φmm)	Mass(kg)
EWF-22	15.0-22.0	1.5	4.76	7.3
EWF-30	22.0-30.0	1.5	4.76	7.7

EWF-40 /50 /60 /70

Standard

FUNCTION

- Gauge
- Cartridge spring assembly
- Plug type cable set
- Fall arrest device
- Drum lock device
- Worm gear spring adjustment
- CE Mark available



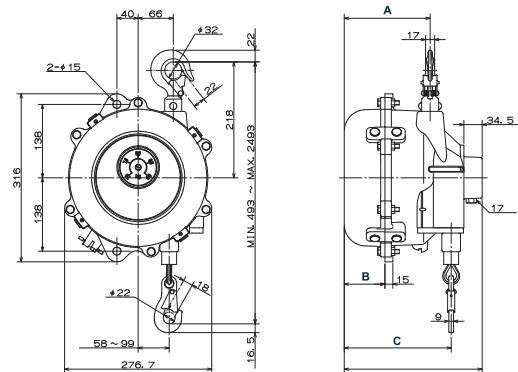
Model	Capacity(kg)	Travel(m)	Cable dia(φmm)	Mass(kg)
EWF-40	30.0-40.0	1.5	4.76	9.7
EWF-50	40.0-50.0	1.5	4.76	10.1
EWF-60	50.0-60.0	1.5	4.76	11.1
EWF-70	60.0-70.0	1.5	4.76	11.4

EWF-90/105/120

Large capacity

FUNCTION

- Gauge
- Cartridge spring assembly
- Plug type cable set
- Fall arrest device
- Drum lock device
- Worm gear spring adjustment
- CE Mark available



Model	Capacity(kg)	Travel(m)	Cable dia(φmm)	Mass(kg)
EWF-90	70.0- 90.0	2.0	4.76	21.9
EWF-105	85.0-105.0	2.0	4.76	24.0
EWF-120	100.0-120.0	2.0	4.76	27.5

Model	A	B	C	D
EWF-90	161.5	76.5	157-201	259.5
EWF-105	179.5	94.5	175-219	277.5
EWF-120	203.5	118.5	199-243	301.5

Selection of suitable model

Always use a suitable model meeting the total weight of suspended tool or instrument. The balancer should be selected considering the weight of the tool and accessories.

Installation

- Install Spring balancers uneven not to hit each other when the balancers are installed in a line.
- Always employ a secondary support chain and leave the slack for smooth swivel.
- Always adjust the spring tension to meet the total weight of tool and the application.