

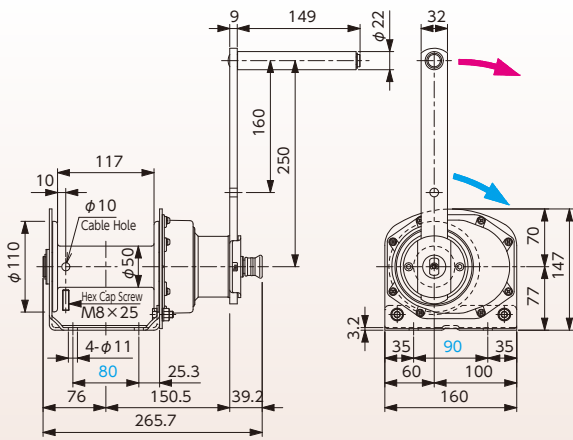
Specification / Dimension

PNW-100N

PSW-100N
SSW-100N
PZW-100N

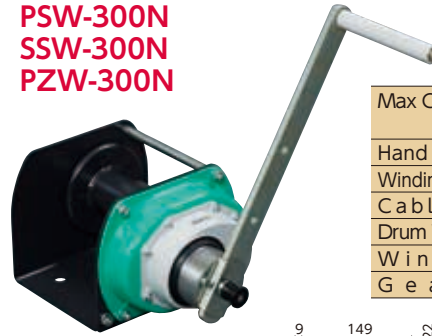


Max Capacity(1 st Layer)	100kg
(Top 6 th Layer)	52kg
Hand Pressure Load	116N
Winding Length per Turn	172.7mm
Cable Diameter	φ5mm
Drum Winding Capacity	30m
Winch Weight	7.5kg
Gear Ratio	1:1

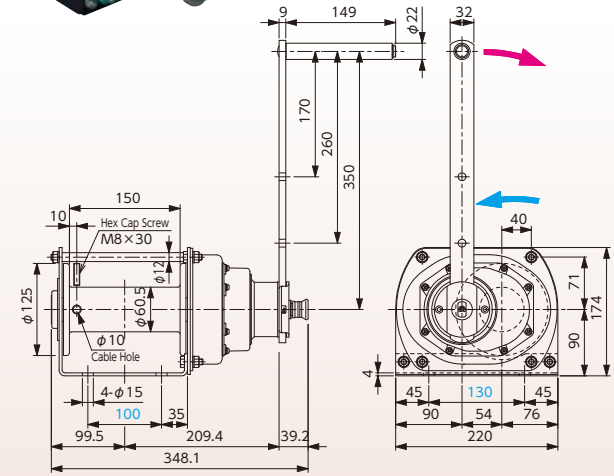


PNW-300N

PSW-300N
SSW-300N
PZW-300N



Max Capacity(1 st Layer)	300kg
(Top 5 th Layer)	174kg
Hand Pressure Load	110N
Winding Length per Turn	72.5mm
Cable Diameter	φ6mm
Drum Winding Capacity	30m
Winch Weight	12kg
Gear Ratio	1:2.88

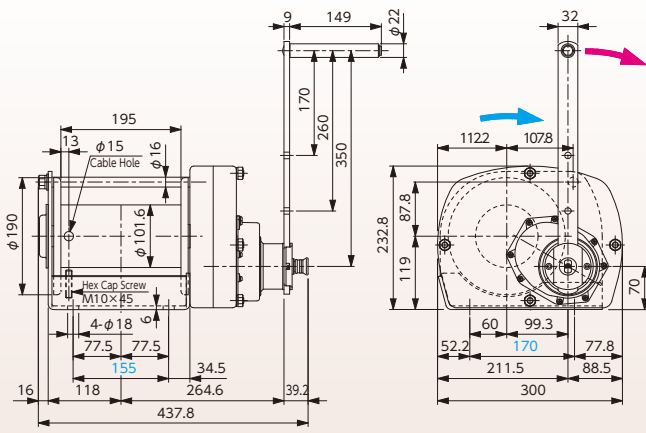


PNW-1500N

PSW-1500N
PZW-1500N



Max Capacity(1 st Layer)	1500kg
(Top 4 th Layer)	975kg
Hand Pressure Load	123N
Winding Length per Turn	15.4mm
Cable Diameter	φ10mm
Drum Winding Capacity	30m
Winch Weight	26kg
Gear Ratio	1:22.68

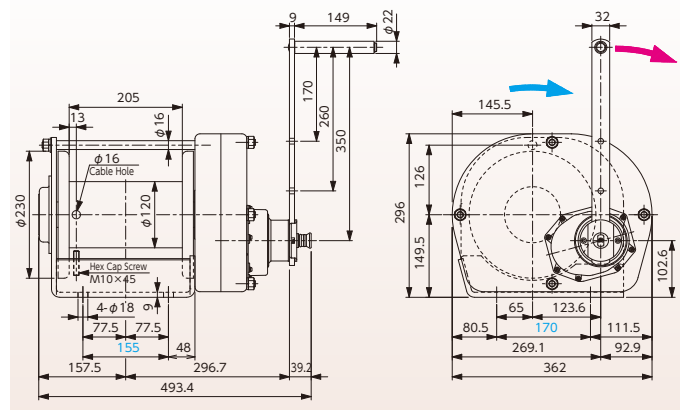


PNW-2100N

PSW-2100N · PZW-2100N

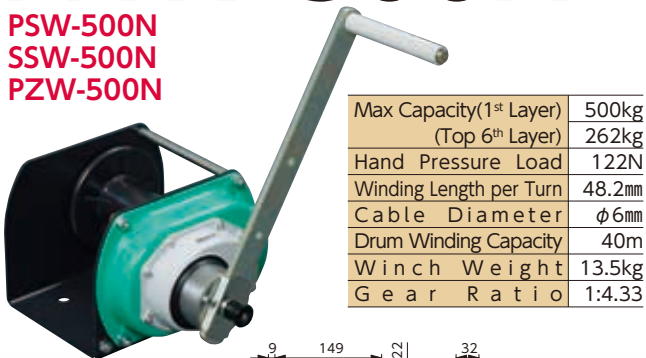


Max Capacity(1 st Layer)	2100kg
(Top 4 th Layer)	1358kg
Hand Pressure Load	158N
Winding Length per Turn	14.2mm
Cable Diameter	φ12mm
Drum Winding Capacity	30m
Winch Weight	46kg
Gear Ratio	1:29.16

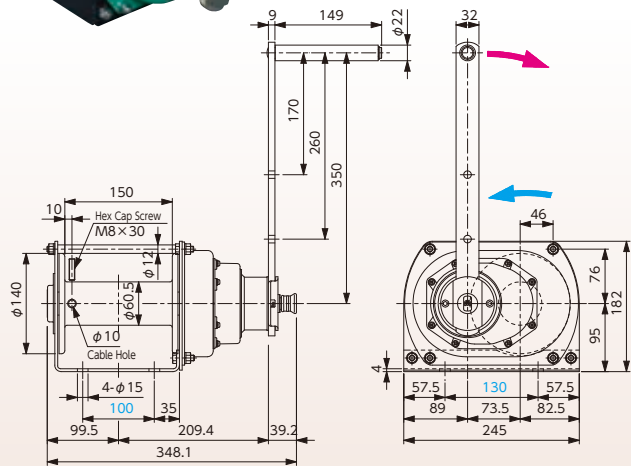


PNW-500N

PSW-500N
SSW-500N
PZW-500N



Max Capacity(1 st Layer)	500kg
(Top 6 th Layer)	262kg
Hand Pressure Load	122N
Winding Length per Turn	48.2mm
Cable Diameter	φ6mm
Drum Winding Capacity	40m
Winch Weight	13.5kg
Gear Ratio	1:4.33

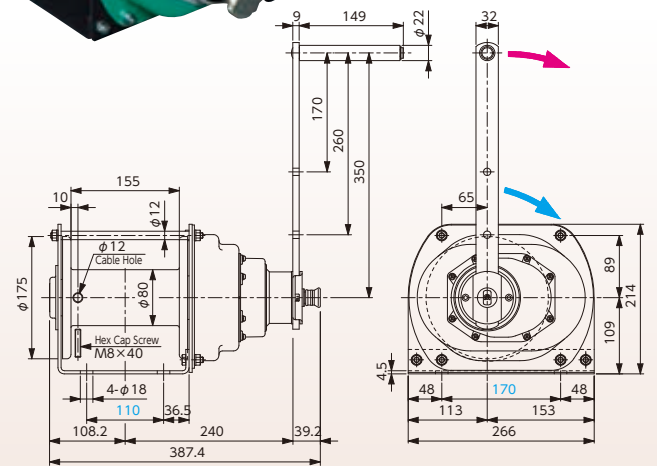


PNW-950N

PSW-950N • SSW-950N
PZW-950N

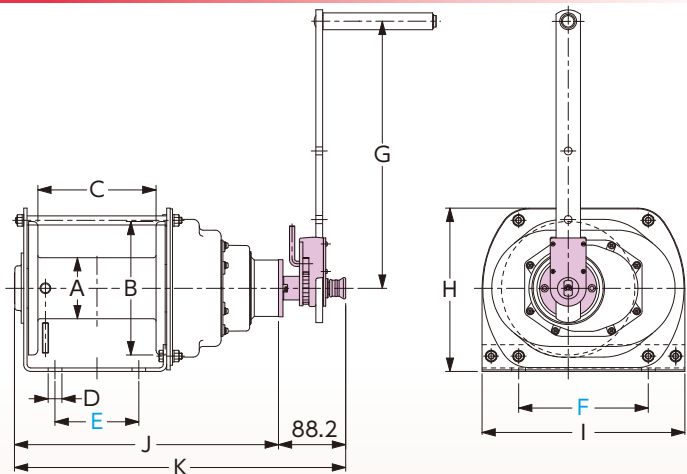


Max Capacity(1 st Layer)	950kg
(Top 5 th Layer)	550kg
Hand Pressure Load	114N
Winding Length per Turn	22.6mm
Cable Diameter	φ8mm
Drum Winding Capacity	30m
Winch Weight	19kg
Gear Ratio	1:12.19



PRW-N Series

PRW-100N • PRW-300N
PRW-500N • PRW-950N
PRW-1500N • PRW-2100N



● The main PRW body shown in the detailed diagram is the same as that of PNW, except the handle part

PRW	A	B	C	D	E	F	G	H	I	J	K
100N	φ50	φ110	117	φ11	80	90	250	147	160	224.5	312.7
300N	φ60.5	φ125	150	φ15	100	130	350	174	220	306.9	395.1
500N	φ60.5	φ140	150	φ15	100	130	350	182	245	306.9	395.1
950N	φ80	φ175	155	φ18	110	170	350	214	266	346.2	434.4
1500N	φ101.6	φ190	195	φ18	155	170	350	232.8	300	396.6	484.8
2100N	φ120	φ230	205	φ18	155	170	350	296	362	452.2	540.4

Note

- The photo shows PNW series, but the each dimension of SSW • PSW series is the same.
- The dimension of PZW series is different from it of this page. Please refer to the drawing of PZW series.
- The dimension colored blue shows the setting pitch of winches.
- Shows the rotating direction of the handle at the time of winding in
- Shows the rotating direction of the drum